



Thirteen Lines

News and Notes from the LaGrange County Department of Parks and Recreation

Summer 2012

May is National Wetlands Month. I find it remarkable that I not only notice, but that I point this declaration out to others deliberately. I want others to think and feel the way I do, that wetlands are special and they matter.

I did not always think that wetlands were special. It is true that as a boy I loved splashing and frog finding, but I have lived most of my life in farm country. Soggy ground has often been considered just an impediment to a tractor. In general, wetlands were looked at as unproductive, so we drained them.

I can remember being impressed by some drainage programs. A grid-work of ditches made new fields. Squeezing muck out of the soil allowed a road to go through. They emptied the Great Black Swamp. My life has benefitted by these types of projects. Now I know more about ecosystems and I am not as easily impressed anymore.

Water is vital to every living thing. It is so pervasive that it comes and goes with each breath we take. Water flows over and under the land. Sometimes too much flows by. Sometimes not enough. This is where wetlands come in. They capture and hold water when it is overly abundant. They slowly release it when the water flow is sparse. Water carries particles as it flows. Wetlands filter particles out.

Wetlands have a bad reputation for mosquito breeding. Reality is mosquitoes breed best in every little puddle including human made puddles among our trash. However, the things that eat mosquitoes often need an entire wetland to thrive. Therefore, eliminating wetlands eliminates mosquito-eaters, but might not eliminate mosquitoes.

How can you tell if it is a wetland? This can be tricky. But a particular soil type or plant community can be wet for as little as two weeks of the year and be sufficient to make a difference. Who would not live without wetlands? Blue flag iris, bullfrog, green darner dragonfly, mayfly, monkey-flower, wood duck, dobsonfly, yellow warbler, green heron, spring peeper, swamp milkweed, blue winged damselfly. The wild world needs wetlands so much that it even has its own flow control contractor that specializes in wetland construction. Beavers' job is to make more wetlands by impounding water where ever it is possible.

This does not mean I think we should undo all of the wetland eradication of the past 200 years. I do think it is worthwhile to undo some of it, and I have. Every inch of land does not need to benefit me for I share the world with innumerable other living things. My eyes see things differently now. That swamp is beautiful.

Scott Beam

LaGrange County Interpretive Naturalist





Summer RECREATION 2012

OUTSIDE!

Adventure Bound Day Camp



Adventure Bound is an exciting week for youth ages 12-15 years old. Activities for Adventure Bound includes challenge initiatives, ropes courses, canoeing the Pigeon River, swimming, and other outdoor recreation. Registration is open to 12-15 year olds. Adventure Bound meets in various locations. Schedule provided upon registration.

challenges

By Gone Days

Serving both guys and gals, By Gone Days concentrates on pioneer and indian games and crafts. Learn a variety of old time activities that generations of kids spent the summer doing.

This five day camp is at David Rogers Pioneer Village. For 8-11 year olds. Additional information mailed upon registration.

pioneer



Swimming Lessons



Swimming lessons are available at Dallas Lake Park. Two week sessions, 50 minutes per day. Available to children 5 years old and older.

Registrations begin June 4.

Call the Park office at 854-2225.

Fee is \$40.00 for the ten day classes. No refunds due to foul weather lesson cancellation.

splash

weekdays at Dallas Lake Park

June 25 - July 6

no lessons July 4

July 9 - 20

July 23 - August 3

Nature Bound

Take part in nature games, environmental education, outdoor skills, and hands-on activities. Nature Bound meets daily at Dallas Lake Park.

Enjoy swimming, hiking, games and crafts. For 6-11 year olds. Additional information mailed upon registration.

birds



The entire Summer Recreation brochure can be requested at LaGrange County Parks, 0505W 700S, Wolcottville IN 46795, 854-2225 or download at [http://lagrangecountyparks.org/pdf/Park summer.pdf](http://lagrangecountyparks.org/pdf/Park%20summer.pdf)



Park Your Horse

a celebration for National Day of the

American Cowboy

July 28, 2012, 12:00-4:00

2012 is the 8th annual National Day of the American Cowboy. Saturday, July 28, cowboys and cowgirls are invited to bring their families for a picnic to David Rogers Memorial Park. Cowboy family activities start at 12:00 and include learning how to saddle a horse, roping, horse shoe pitching, and more. Last year's big hit returns, Cap Gun Fast Draw competing for the Golden Guns.

Cowboy author Mark Redmond, creator of the Arty Anderson western adventures presents Culture of the American Cowboy at 2:00. Redmond is available all afternoon for signing books.

Suggested donation for Park Your Horse is \$3 per person. David Rogers Memorial Park is at 2355W 550S.

For a downloadable map to David Rogers Memorial Park or for more information on LaGrange County Parks call 260/854-2225 or visit www.lagrangecountyparks.org.



Special cowboy guest, author Mark Redmond, presents "Culture of the American Cowboy" at 2:00.



Cowboy Day sponsored by:
Shipshewana Harness
www.shipshewanaharness.com

May 2012 National Wetlands Month

| | | | | | | |
|---|---|-----------|--|--------------------------|-----------|-----------------------------------|
| | | 1 | 2 | 3 | 4 | 5 |
| 6 full moon | 7 | 8 | 9 | 10 | 11 | 12 |
| 13 Mothers Day | 14 | 15 | 16 8:30 Breakfast with the Birds Wonderful Wet- lands | 17 Quilt Class | 18 | 19 Armed Forces Day |
| 20 new moon | 21 | 22 | 23 | 24 | 25 | 26 Maple Wood closed |
| 27 1:30 Folk Jam no interpretive services | 28 Memorial Day all County offices closed | 29 | 30 | 31 | | |

June 2012

| | | | | | | |
|----------------------------|---|-----------------------|--|--------------------------------------|-------------------------------------|-------------------------------------|
| | | | | | 1 Night Walk Pine Knob | 2 free fishing weekend |
| 3 | 4 swim lesson reg- istration begins full moon | 5 | 6 | 7 7:30 Park Board | 8 | 9 |
| 10 | 11 By Gone Days 8-10 | 12 | 13 | 14 Quilt Class Flag Day | 15 | 16 |
| 17 Fathers Day | 18 | 19 new moon | 20 8:30 Breakfast with the Birds Ferns | 21 summer solstice | 22 | 23 |
| 24 1:30 Folk Jam | 25 Nature Bound 6-8 swim I to July 6 | 26 | 27 | 28 7:30 Park Board | 29 | 30 |

July 2012

| | | | | | | |
|--|---|----|---|-----------------------|----|---|
| 1 Maple Wood Closed | 2 | 3 | 4 Independence Day County offices closed full moon | 5 | 6 | 7 |
| 8 Maple Wood Closed | 9 Nature Bound 9-11 swim II to July 20 | 10 | 11 | 12 | 13 | 14 Art Class Distant Storm 10-4 |
| 15 Maple Wood Closed | 16 | 17 | 18 8:30 Breakfast with the Birds Fishing new moon | 19 | 20 | 21 |
| 22 1:30 Folk Jam no interpretive services | 23 swim III to Aug 3 | 24 | 25 | 26 7:30 Park Board | 27 | 28 Cowboy Day Rogers Park Maple Wood closed |
| 29 Maple Wood Closed | 30 Nature Bound 6-8 | 31 | | | | |

Naturally Noteworthy

LaGrange County Offices closed
 May 28 Memorial Day
 July 4 Independence Day
**Maple Wood Nature Center
 closings this quarter:**
 May 26-28 Memorial Day
 July 4 Independence Day
 Sundays in July
 July 28 Cowboy Day

● **Receive 13 Lines** newsletter and monthly Park news as emails. Respond to our email address with "13 Lines" or "e-news" in the subject. Or download online at lgrangecountyparks.org.

- **Pavilion Rentals.** LaGrange County Park Board adopted fees for pavilion rentals: Monday-Friday \$50, Saturday-Sunday \$75
- **Next Hunter Safety** class is August 3-4 at Pine Knob
- **David Rogers Days** pioneer living history festival is August 25-26
- **Dallas Lake Park Season Pass** is \$30 and available at Dallas Park gate house or Parks Office.

- **Spring Cleaning** and found things you don't know how to dispose of? Contact NE IN Solid Waste District, 800-777-5462 www.niswmd.org
- **National Hunting & Fishing Day** celebrated at Pine Knob Park September 22; Archery Shoot, NWTF activities, wild game seminar and more.

Please inform us if you have difficulty accessing any facilities or programs. We are glad to accommodate and want to enhance your experience in the parks.



Breakfast with the Birds

Breakfast with the Birds is for anyone who is free one Wednesday morning of each month. The program starts with coffee and doughnuts. Then a talk or discussion is offered by the naturalist. Bring your binoculars and enjoy a hike in the woods afterward. Recommended donation is \$1.00.



Wonderful Wetlands

May 16 8:30a
May is American wetlands month. Wetlands can be inconvenient when you are trying to build or plow, but they do matter. They form under multiple conditions and serve multiple roles. Explore the different types of wetlands found in LaGrange County.



Ferns

June 20 8:30a
Ferns are incredibly diverse in size, leaf shape, and in propagation. In science language ferns are considered primitive. Yet these survivors have been around long enough to be turned into coal. After the program we will take a fern walk through the maple woods.



Fishing

July 18 8:30a
There is more to fishing than drowning a worm. Guest Angler, Jim Gust, comes to speak on the fine pastime of catching fish. Gust brings an understand of underwater habitats and help with identifying fish. Proper gear for fishing is also discussed.

Friends of LaGrange County Parks

Do you enjoy the parks?
Would you like to see additional parks, facilities, or programs?
Would you like to support the mission of LaGrange County Parks?
Would you like to help?

Friends of LaGrange County Park is an independent organization who supports the mission of LaGrange County Parks through promoting activities of Friends of LaGrange County Parks and raising and receiving contributions in support of LaGrange County Parks.

Contact for additional information:
Kathy Hopper, moose_and_squirrel@hotmail.com or
Guy Thompson, oneguy@embarqmail.com.

Folk Jam



Folk Music Jam Sessions are hosted the fourth Sunday of each month. Jams are mostly folk, country and bluegrass music with other styles thrown in from time to time.

This quarter's Jams are May 27, June 24, July 22, 1:30-5:00p.

If you have any more questions contact Erv Troyer, 463-2247, reo43@aol.com or Maple Wood at 463-4022, maplwood@ligtel.com.



Pine Knob Night Walk

Nature at Night is at least as active as it is for the Daytime Dwellers. To do your living after dark you must pay attention to your senses differently than in the light.

During this guided night walk you can encounter Nature at Night on its own terms. You have to feel the trail you are walking on. A scent can tell you which plants you are near. The sounds belong to voices that are seldom heard in sunlight.

Among the possible nighttime encounters can be flying squirrels, raccoons, whippoorwills, and bats. We may also see glow worms and glowing fungus. The best part is calling owls.

Friday, May 28, is the night walk. Meet at Pine Knob Park, 2825E SR120, at 8:30p.

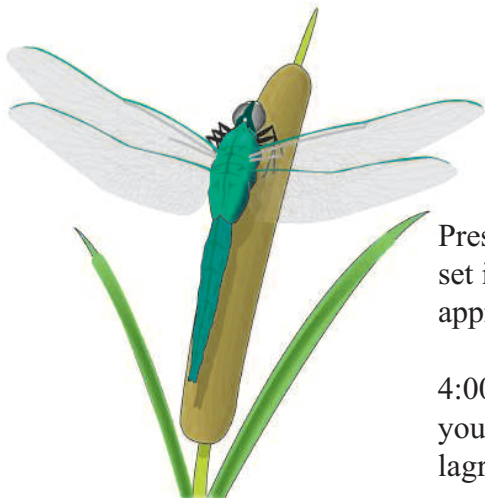
Quilt Class

Summer Sampler Quilt workshops are Thursdays, May 17, June 14, August 16, 9:00-3:00, at Maple Wood Nature Center. The cost for each session of Summer Sampler Quilt Workshop is \$25. Register at LaGrange County Park Office lagrangecountyparks@yahoo.com or 854-2225.

These sessions work on sample quilt blocks. Each class a new technique or different way of construction is taught. Quilt Sampler fabric buying information and cutting instructions are provided upon registration.

For more details contact quilt instructors Ira Johnson 463-1438 or Julia Wolheter 367-1449.

Register for Summer Sampler Quilt Class at LaGrange County Parks, 260/854-2225 or lagrangecountyparks@yahoo.com.



Summer Art Class

Watching a storm boiling across the plain is awe inspiring. Preserving that storm in a painting is July's Art Class. The scene is set in the American Southwest. Buttes tower behind the plain. The approaching storm silhouettes a bison.

Summer Art Class, Distant Storm, is Saturday, July 14, 10:00-4:00. Supplies are provided. Bring your own paints and brushes if you have them. Also, bring your lunch. Cost is \$20. Register at lagrangecountyparks@yahoo.com or call the Park Office, 854-2225.

**LaGrange
County
Parks**



and recreation

**0505W 700S
Wolcottville IN 46795**



Thirteen Lines

News and Notes from the LaGrange County Parks

LaGrange County Parks

0505W 700S
Wolcottville IN 46795
(260) 854 2225
lagrangecountyparks@yahoo.com
<http://www.lagrangecountyparks.org>
Parks open 8:00 am - sunset

Park Office Hours: Monday-Friday

8 am - 12:00 noon, 12:30 pm - 3:30 pm

Maple Wood Nature Center

4550 E 100 S
(260) 463-4022
maplwood@ligtel.com

Hours: Wednesday 8 am - 4 pm
Saturday 9 am - 5 pm
Sunday 1 pm - 5 pm

other days by special appointment
closed Sundays in July

LaGrange County Board of Parks and Recreation

Dr. John Egli: President
Pat Pichon: Vice President
Ardala Hepler: Secretary
Mark Thompson
Julia Wolheter
Robert Arnold